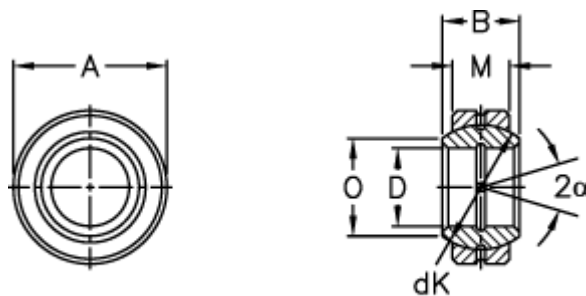


Article number: 03501045

Description: Fluro Rod end GE 45E-2RS

Measures



Str. 6-12 uden smørerille

A	= 68 0 -0,013	Tilt angle = 7
B	= 32	Weight = 400
D	= 45 0 -0,012	
dK	= 60	
Dynamic load C (kN)	= 127	
M	= 25	
O	= 50.7	
Static load C0 (kN)	= 640	